



2018-2021 (30 months) 

Coordinator:
Derbyshire County Council 

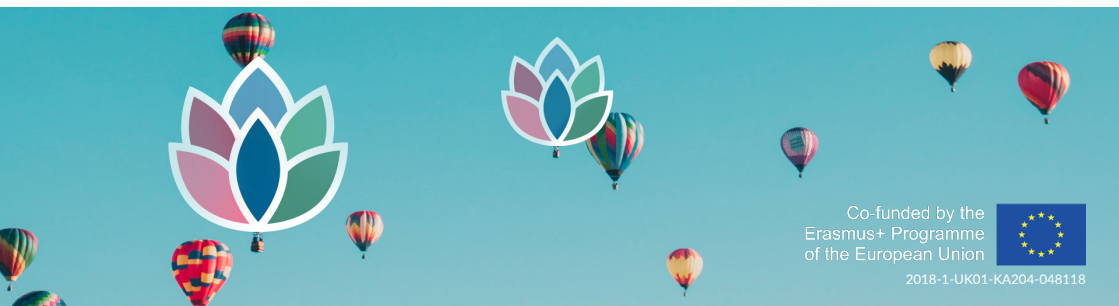
PROMEIA 
Folkuniversitetet 

AZM-LU 
Lifelong Learning Platform 

tampada (Tracking and Monitoring the Progress of ADult Learners) is a European project coordinated by Derbyshire County Council (UK) and involving five partners from EU countries.

It addresses the need for **adult learning providers** to **improve the quality and effectiveness of their provision for disadvantaged learners** by defining measurable Outcome Indicators to monitor their 'lifelong and lifewide progress'.

The tampada tool looks at identifying **what learners gain from learning** and **how it helps them in moving forward with their life** if they get a job, if they feel more confident or if they continue with further education for instance. It therefore measures educational, personal, social and economic outcomes of adult education.



Co-funded by the
Erasmus+ Programme
of the European Union



2018-1-UK01-KA204-048118

Achievements

» **Assessment Toolkit** for learners' lifelong and lifewide progress

The Toolkit includes a set of indicators and descriptors for measuring learners' progress before, during and after taking up learning. The long-term outcomes are clustered under four categories: Development of self and life skills, Health and well-being, Social, community and citizenship, Employability, employment and learning (Summer 2019)

» **Manual on outreach and engagement strategies** for monitoring learners' progress

The Manual will complement the Toolkit by designing strategies based on differentiation techniques, i.e. the type of disadvantage and local context. This document will serve as a guide addressed to adult education providers and stakeholders to apply an effective outreach and engagement strategy to benefit learners and other key stakeholders. (December 2019)

» **Digital lifelong and lifewide progress assessment tool**

This action consists in the development of an ICT and digital solutions to ensure the Toolkit and Manual widest possible uptake. It will enable adult education providers to systematically collect data on learner's progress and destinations, and will provide insights to enable improvement of services and educational provisions. (May 2020)

» **Survey report and policy recommendations**

The main objective of this output is to test the toolkit for its functionality, usefulness and data production, storage, compilation, comparison and benchmarking processes. Based on the results of the pilot, a document comprising recommendations for systemic uses at the EU-wide, national, regional and local levels will be produced. (January 2021)